

Cutter Heads and Channel Cutters Freze Kafaları ve Kanal Frezeler

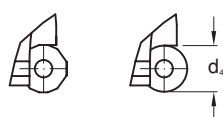
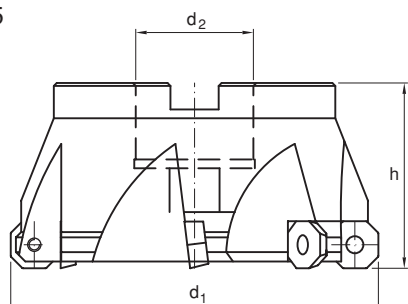
FCT 45....16 Serisi / Series	107
MCT 45....16 Serisi / Series	108
FKR/L 20 17 Serisi / Series	109
PFR/L 20 47 Serisi / Series	109
AFR/L 20 27 Serisi / Series	109
FKR/L 90....16 Serisi / Series	110
FKR/L 90....22 Serisi / Series	110
AFR/L 75....12 Serisi / Series	111
AFR/L 75....12S Serisi / Series	111
AFR/L 75....15 Serisi / Series	112
AFR/L 75....12AL Serisi / Series	112
NFR/L 75....12 Serisi / Series	113
A 270....12 Serisi / Series	113
A 290....12 Serisi / Series	114
T90A/AS Serisi / Series	114
A 240 Serisi / Series	114
Hız dönüşüm tablosu / Series	115
TKF....16 Serisi / Series	116
TKF....11 Serisi / Series	117
TKFR/L....16 Serisi / Series	117
S2....12 Serisi / Series	118
TDK....09 Serisi / Series	118
TSK....12 Serisi / Series	119
TK....93SLN..12 Serisi / Series	119
TK....93SCN..N Serisi / Series	120



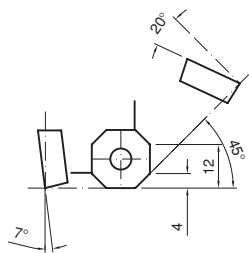


TWINCUT Copy and Face Milling Cutter TWINCUT Kopya ve Yüzey Freze Kafaları

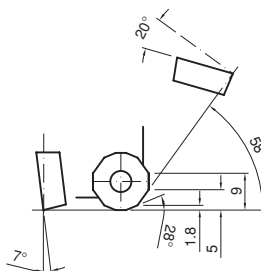
FCT45



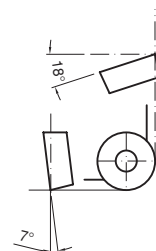
OC - X0606



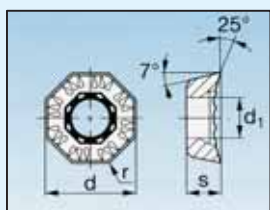
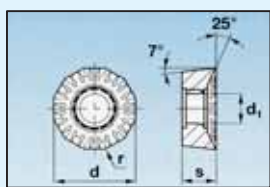
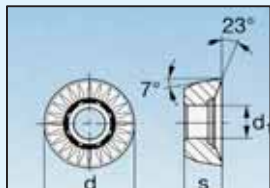
XC - X1606



RC - X1606

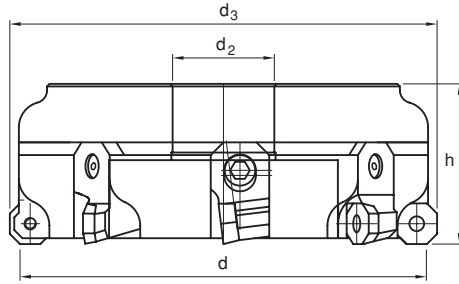


ISO Code No. ISO Kod No.	Stock Stok	d ₁	d ₄	h	d ₁	Z	Insert Kullanılan Uç			Screw Uç Sıkma Vidası	Wrench Anahtar
FCT 45 52 R04 16	●	52	16	40	22	4	OCKX 0606	XCKX 1606	RCKX 1606	7883202	T 15
FCT 45 66 R05 16	●	66	16	50	27	5	AD - TR	AD - TR	MO - TR		
FCT 45 80 R06 16	●	80	16	50	27	6					
FCT 45 100 R07 16	○	100	16	50	32	7					
FCT 45 125 R08 16	○	125	16	63	40	8					

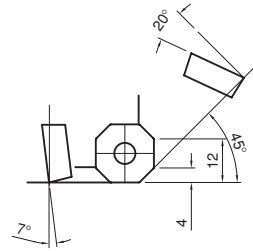
N= Number of Cutting Edges N= Kesici Kenar Sayısı	Dimension Ölçüler mm						ISO - Code ISO - Kod	Quality Kaliteler		
	l	s	d	d ₁	b	r		LW225 LW240 LW415 LW610	LC225S LC240S LC415S	LC225T LC240T LC610T
 N:8		6.35	16	5.8		0.5	OCKX 0606 AD - TR	1054000	1054001	1054003
								1054002		1054005
								1054004		
 N:12		6.35	16	5.8			XCKX 1606 AD - TR	1055673	1055676	
								1055674		1055677
									1055675	
 N:12		6.35	16	5.8			RCKX 1606 MO - TR	1068430	1068431	
								1068432		1068433
									1068434	

MULTIMILL - Face Milling Cutter MULTIMILL - Yüzey Freze Kafaları

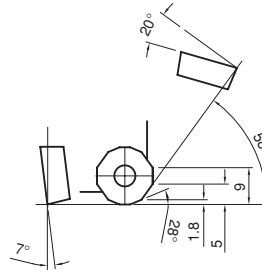
MCT45



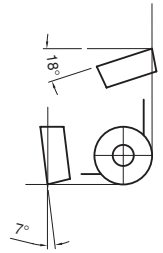
OC - X0606



XC - X1606

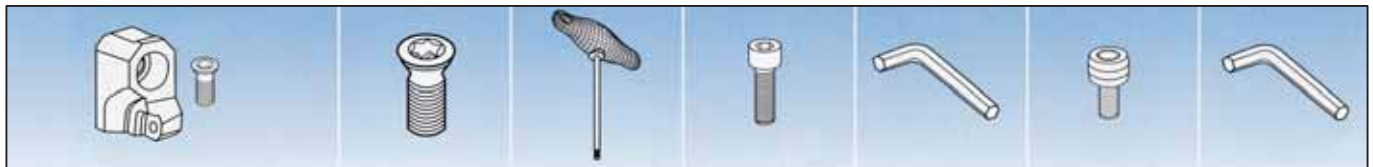


RC - X1606

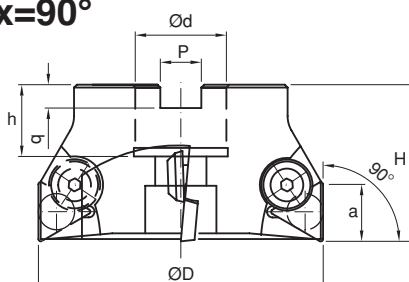


Ordering No. Takım Kod No.	Stock Stok	d ₁	d ₃	h	d ₂	Z	Inserts Kullanılan Uçlar			Screw Uç Sıkma Vidası	Wrench Anahtar
MCT45 160 R10 16		160	168	63	40	8	OCKX 0606	XCKX 1606	RCKX 1606	7883202	T 15
MCT45 200 R10 16		200	208	63	60	10	AD - TR	AD - TR	MO - TR		
MCT45 250 R12 16		250	258	63	60	12					
MCT45 315 R16 16		315	323	80	60	16					
MCT45 400 R18 16		400	408	80	60	18					
MCT45 500 R22 16		500	508	80	60	22					

Ordering No. Takım Kod No.	Stock Stok	d ₁	d ₃	h	d ₂	Z	Inserts Kullanılan Uçlar			Screw Uç Sıkma Vidası	Wrench Anahtar
MCT 45 S 125 R08 16		125	133	63	40	8	OCKX 0606	XCKX 1606	RCKX 1606	7883202	T 15
MCT 45 S 160 R12 16		160	168	63	40	12	AD - TR	AD - TR	MO - TR		
MCT 45 S 200 R14 16		200	208	63	60	14					
MCT 45 S 250 R18 16		250	258	63	60	18					
MCT 45 S 315 R22 16		315	323	80	60	22					
MCT 45 S 400 R26 16		400	408	80	60	26					
MCT 45 S 500 R32 16		500	508	80	60	32					

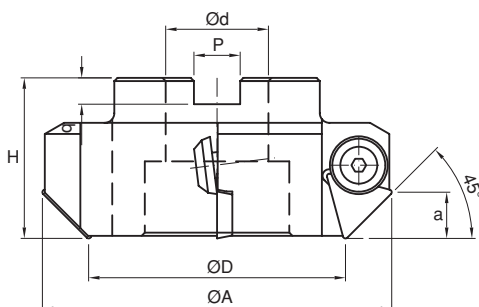


Face and Side Milling Cutter $\alpha=90^\circ$
Alın ve Köşe Freze Kafası $\alpha=90^\circ$



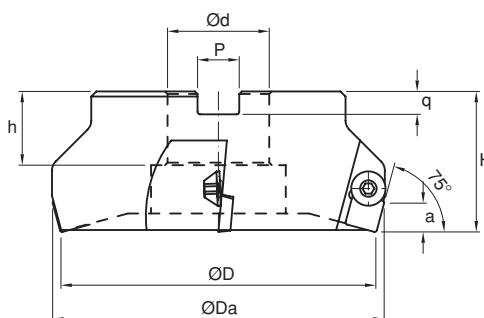
Ordering No. Takım Kod No.	Stock Stok		DIMENSION KATER ÖLÇÜLERİ								Clamping Screw Baskı Vidası	Wrench Allen	Insert Kesici Uç
	R	L	ØD	Ød	H	q	P	h	a	Z			
FKR/L 20 17 0040	●	○	40	16	43	5.9	8.4	17	14.5	3	C16 644	Ta3	TPKN 1603PD
FKR/L 20 17 0050	●	○	50	22	51	6.3	10.4	19.5	14.5	3			
FKR/L 20 17 0063	●	○	63	22	51	6.3	10.4	19.5	22	3	C16 648	Ta4	TPKN 2204PD
FKR/L 20 17 0080	●	○	80	32	55	8	14.4	25	22	4			
FKR/L 20 17 0100	○	○	100	40	55	9	16.4	32	22	5			

Face and Chamfer Milling Cutter $\alpha=45^\circ$
Alın ve Pah Freze Kafası $\alpha=45^\circ$



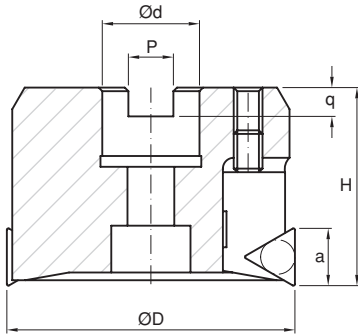
Ordering No. Takım Kod No.	Stock Stok		DIMENSION KATER ÖLÇÜLERİ								Clamping Screw Baskı Vidası	Wrench Allen	Insert Kesici Uç
	R	L	ØD	ØA	Ød	H	q	P	a	Z			
PFR/L 20 47 0040	○	○	40	65	16	43	5.6	8.4	9	3	C16 644	Ta3	TPKN 1603PD
PFR/L 20 47 0050	○	○	50	75	22	50	6.3	10.4	9	3			
PFR/L 20 47 0063	○	○	63	88	22	50	6.3	10.4	13	3	C16 648	Ta4	TPKN 2204PD
PFR/L 20 47 0080	○	○	80	95	32	50	8	14.4	13	4			
PFR/L 20 47 0100	○	○	100	115	40	50	9	16.4	13	5			

Face Milling Cutter $\alpha=45^\circ$
Alın Freze Kafası $\alpha=45^\circ$

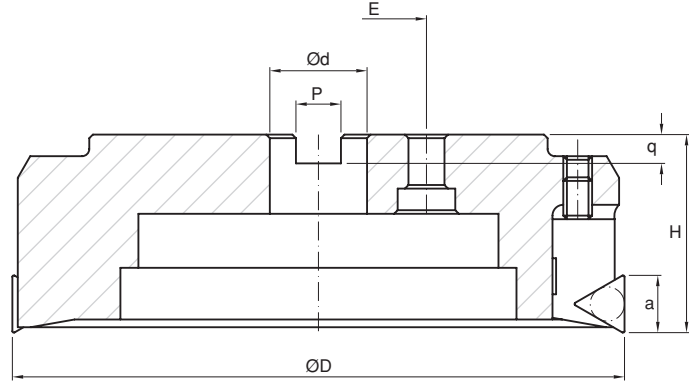


Ordering No. Takım Kod No.	Stock Stok		DIMENSION KATER ÖLÇÜLERİ								Clamping Screw Baskı Vidası	Wrench Allen	Insert Kesici Uç	
	R	L	ØD	ØA	Ød	H	q	P	h	a				Z
AFR/L 20 27 0050	●	○	50	56	22	50	6.3	10.4	19.5	8	3	C16 644	Ta3	SPKN 1203 ED..
AFR/L 20 27 0063	●	○	63	69	22	50	6.3	10.4	19.5	8	4			
AFR/L 20 27 0080	○	○	80	86	32	50	8	14.4	25	8	5			
AFR/L 20 27 0100	○	○	100	106	32	50	8	14.4	25	8	6			

Face and Side Milling Cutter $\alpha=90^\circ$ - 16 Alın ve Köşe Freze Kafası $\alpha=90^\circ$ - 16



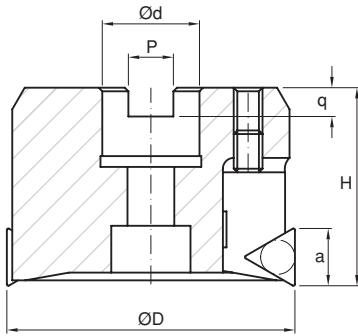
Ø80 - Ø125



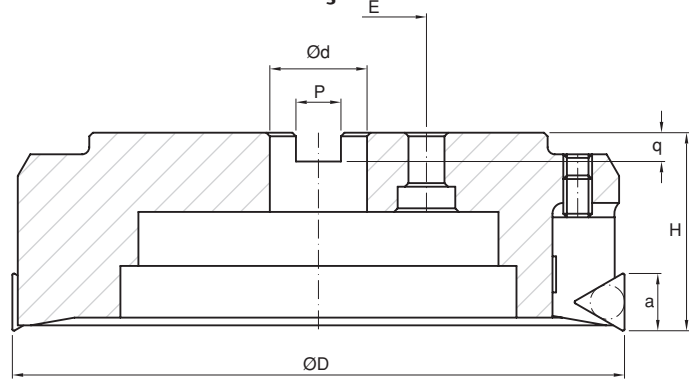
Ø160 - Ø400

Ordering No. Takım Kod No.	Stock Stok		Dimension Ölçüler mm							Clamping Pace Baskı Parçası	Clamping Screw Baskı Vidası	Seat Altılık	Screw Ayar Vidası	Wrench Allen	Insert Kesici Uç	
	R	L	ØD	Ød	H	P	E	a	q							Z
FKR/L 90 0080 16	○	○	80	27	55	12.4		13	8	6	FB 12	FR 650	FK16R/L	M8 x 10	Ta4	TPKN 1603PD
FKR/L 90 0100 16	○	○	100	32	57	14.4		13	8	8						
FKR/L 90 0125 16	○	○	125	40	57	16.4		13	8	8						
FKR/L 90 0160 16	○	○	160	40	57	16.4	66.7	13	9	12						
FKR/L 90 0200 16	○	○	200	60	60	25.7	101.6	13	9	15						
FKR/L 90 0250 16	○	○	250	60	60	25.7	101.6	13	14	18						
FKR/L 90 0315 16	○	○	315	70	60	25.7	101.6	13	14	24						
							177.8									
FKR/L 90 0400 16	○	○	400	75	60	25.7	101.6	13	14	32						
							177.8									

Face and Side Milling Cutter $\alpha=90^\circ$ - 22 Alın ve Köşe Freze Kafası $\alpha=90^\circ$ - 22



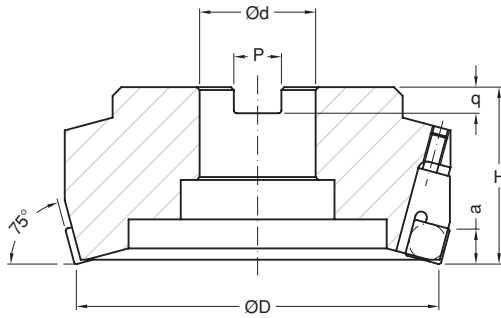
Ø80 - Ø125



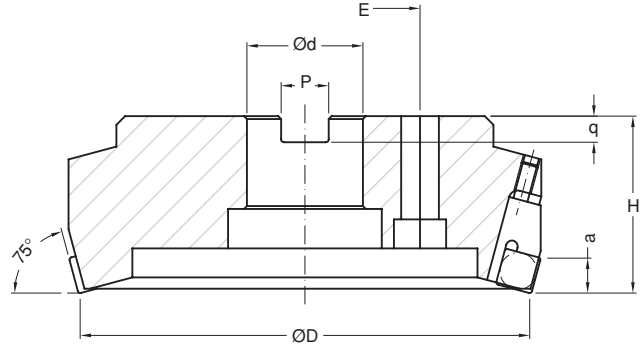
Ø160 - Ø400

Ordering No. Takım Kod No.	Stock Stok		Dimension Ölçüler mm							Clamping Pace Baskı Parçası	Clamping Screw Baskı Vidası	Seat Altılık	Screw Ayar Vidası	Wrench Allen	Insert Kesici Uç	
	R	L	ØD	Ød	H	P	E	a	q							Z
FKR/L 90 0100 22	○	○	100	32	62	14.4		18	8	5	FB 12	FR 650	FK22R/L	M8 x 10	Ta4	TPKN 2204PD
FKR/L 90 0125 22	○	○	125	40	62	16.4		18	9	6						
FKR/L 90 0160 22	○	○	160	40	62	16.4	66.7	18	9	10						
FKR/L 90 0200 22	○	○	200	60	62	25.7	101.6	18	14	12						
FKR/L 90 0250 22	○	○	250	60	62	25.7	101.6	18	14	15						
FKR/L 90 0315 22	○	○	315	60	72	25.7	101.6	18	14	18						
							177.8									
FKR/L 90 0400 22	○	○	400	60	74	25.7	101.6	18	14	24						
							177.8									
FKR/L 90 0500 22	○	○	500	60	80	25.7	101.6	18	14	30						
							177.8									

Face Milling Cutter $\alpha=75^\circ$ - 15 Alın Freze Kafası $\alpha=75^\circ$ - 15



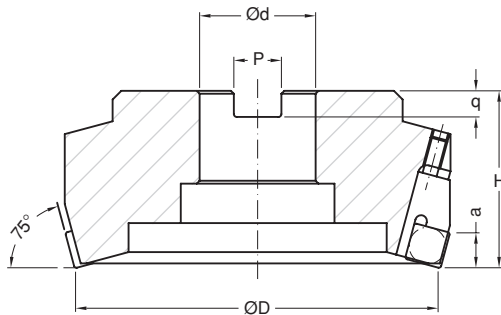
Ø100 - Ø125



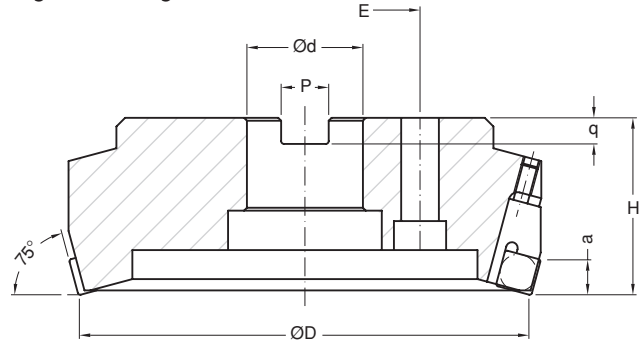
Ø160 - Ø500

Ordering No. Takım Kod No.	Stock Stok		Dimension Ölçüler mm							Clamping Pace Baskı Parçası	Clamping Screw Baskı Vidası	Seat Altılık	Screw Ayar Vidası	Wrench Allen	Insert Kesici Uç	
	R	L	ØD	Ød	H	P	E	a	q							Z
AFR/L 75 0100 15	○	○	100	32	62	14.4		8	8	6	FB 12	FR 650	FA15PR/L	M8 x 10	Ta4	SPKN 1504ED
AFR/L 75 0125 15	○	○	125	40	62	16.4		8	8	8						
AFR/L 75 0160 15	○	○	160	40	62	16.4	66.7	8	9	12						
AFR/L 75 0200 15	○	○	200	60	62	25.7	101.6	8	9	15						
AFR/L 75 0250 15	○	○	250	60	62	25.7	101.6	8	14	18						
AFR/L 75 0315 15	○	○	315	60	68	25.7	101.6	8	14	24						
							177.8									
AFR/L 75 0400 15	○	○	400	60	74	25.7	101.6	8	14	32						
							177.8									
AFR/L 75 0500 15	○	○	500	60	74	25.7	101.6	8	14	40						
							177.8									

Aluminium Series Face Milling Cutter $\alpha=75^\circ$ - 12 Alüminyum İşleme için Alın Freze Kafası $\alpha=75^\circ$ - 12



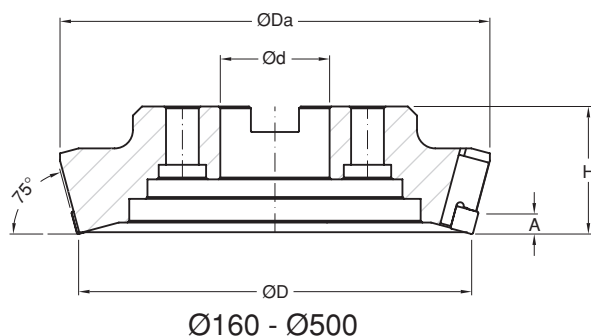
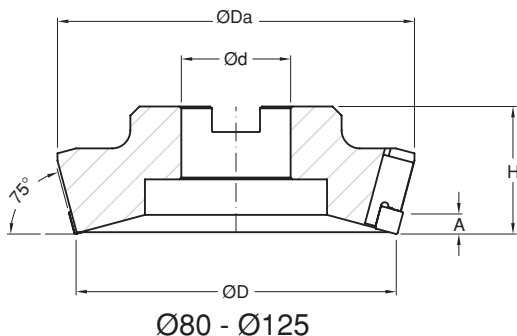
Ø80 - Ø125



Ø160 - Ø500

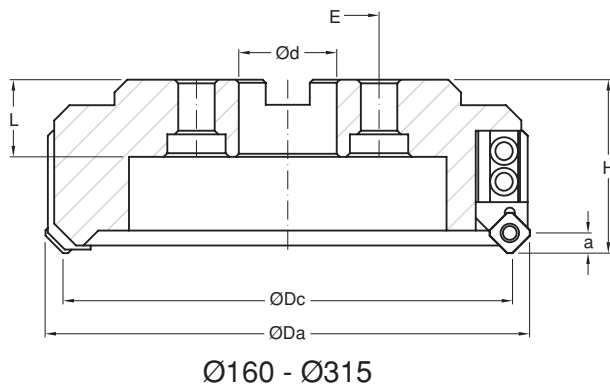
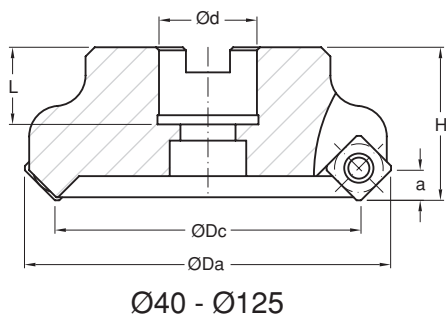
Ordering No. Takım Kod No.	Stock Stok		Dimension Ölçüler mm							Clamping Pace Baskı Parçası	Clamping Screw Baskı Vidası	Seat Altılık	Screw Ayar Vidası	Wrench Allen	Insert Kesici Uç	
	R	L	ØD	Ød	H	P	E	a	q							Z
AFR/L 75 0080 12AL	○	○	80	27	58	12.4		6	8	5	FB 12	FR 650	FA 12 ALR/L	M8 x 10	Ta4	SFAN 1203EF
AFR/L 75 0100 12AL	○	○	100	32	58	14.4		6	8	6						
AFR/L 75 0125 12AL	○	○	125	40	61	16.4		6	8	6						
AFR/L 75 0160 12AL	○	○	160	40	61	16.4	66.7	6	9	10						
AFR/L 75 0200 12AL	○	○	200	60	62	25.7	101.6	6	9	12						
AFR/L 75 0250 12AL	○	○	250	60	62	25.7	101.6	6	14	15						
AFR/L 75 0315 12AL	○	○	315	60	68	25.7	101.6	6	14	20						
							177.8									
AFR/L 75 0400 12AL	○	○	400	60	74	25.7	101.6	6	14	24						
							177.8									
AFR/L 75 0500 12AL	○	○	500	60	74	25.7	101.6	6	14	32						
							177.8									

FACEMILL $x=75^\circ$ - 12 Negative Negatif Alın Freze Kafası $x=75^\circ$ - 12



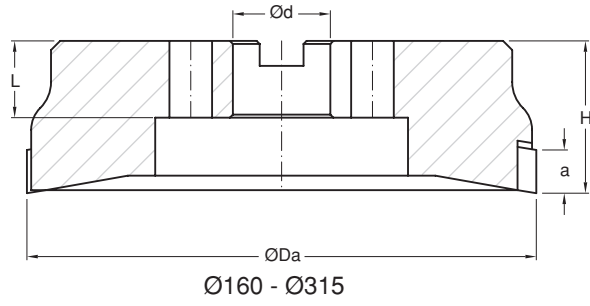
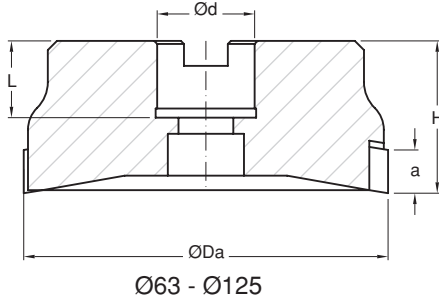
Ordering No. Takım Kod No.	Stock Stok		Dimension Ölçüler mm						Clamping Pace Baskı Parçası	Clamping Screw Baskı Vidası	Seat Altık	Screw Ayar Vidası	Wrench Allen	Insert Kesici Uç
	R	L	ØD	Ød	ØDa	H	A	Z						
NFR/L 75 0080 12	○	○	80	27	97	56	6	5	FB 12 N	FR 650	NFA 12	M8 x 10	Ta4	SNGN 1204EN
NFR/L 75 0100 12	○	○	100	32	117	56	6	6						
NFR/L 75 0125 12	○	○	125	40	142	56	6	8						
NFR/L 75 0160 12	○	○	160	40	177	60	6	12						
NFR/L 75 0200 12	○	○	200	60	217	60	6	15						
NFR/L 75 0250 12	○	○	250	60	267	60	6	18						
NFR/L 75 0315 12	○	○	315	60	332	62	6	24						
NFR/L 75 0400 12	○	○	400	60	417	70	6	32						
NFR/L 75 0500 12	○	○	500	60	517	74	6	40						

Positive Face Milling Cutter A270 $x=45^\circ$ Pozitif Alın Freze Kafası A270 $x=45^\circ$



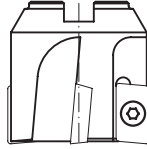
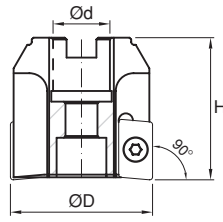
Ordering No. Takım Kod No.	Stock Stok		Dimension Ölçüler mm							Screw Uç Sıkma Vidası	Seat Altık	Torx Wrench Torx Anahtar	Insert Kesici Uç	
	R	L	ØDc	ØDa	Ød	H	L	E E ₁	Z					a
A 270 40 R03 12	●	○	40	54	16	40	19		3	6	7883202	—	T15	SDHT 1204AE
A 270 50 R03 12	●	○	50	64	22	40	20		3	6				SDHT 1204AE-27
A 270 63 R04 12	●	○	63	77	22	40	20		4	6				SDHT 1204AE
A 270 80 R05 12	○	○	80	94	27	50	22		5	6				SDHT 1204AE-27
A 270 100 R06 12	○	○	100	114	32	50	26		6	6				SDHT 1204AE
A 270 125 R06 12	○	○	125	139	40	63	30		6	6				SDHT 1204AE-27
A 270 160 R08 12	○	○	160	174	40	68	32	66.7	8	6		A 270 ALT		SDHT 1204AE
A 270 200 R10 12	○	○	200	214	63	68	40	101.6	10	6				SDHT 1204AE-27
A 270 250 R12 12	○	○	250	264	63	70	40	101.6	12	6				SDHT 1204AE
A 270 315 R16 12	○	○	315	329	63	70	40	101.6	16	6				SDHT 1204AE-27
								177.8						

Tangential Milling Cutter A290 $\alpha=90^\circ$ - 16 Tanjantiyal Freze Kafası A290 $\alpha=90^\circ$ - 16

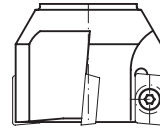
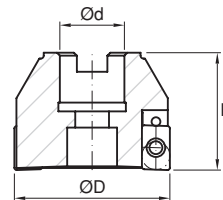


Ordering No. Takım Kod No.	Stock Stok	Dimension Ölçüler mm						Screw Uç Sıkma Vidası	Torx Wrench Torx Anahtar	Insert Kesici Uç
		ØDa	Ød	H	L	Z	a			
A 290 63 R05 12	○	63	22	40	20	5	8	7815102	T15	CNHW 1205
A 290 80 R08 12	○	80	27	50	28	8	8			
A 290 100 R10 12	○	100	32	50	28	10	8			
A 290 125 R12 12	○	125	40	56	30	12	8			
A 290 160 R16 12	○	160	40	62	35	16	8			

Face Milling Cutter T90 A / AS $\alpha=90^\circ$ Alın Freze Kafası T90 A / AS $\alpha=90^\circ$



Ordering No. Takım Kod No.	Stock Stok	Dimension Ölçüler mm				Screw Uç Sıkma Vidası	Torx Wrench Torx Anahtar	Insert Kesici Uç
		ØD	Ød	H	Z			
T90A 50 R04 22	●	50	22	40	4	7815102	T15	APKT 1604..
T90A 63 R05 22	●	63	22	40	5			
T90A 80 R06 27	○	80	27	50	6			
T90A 100 R07 32	○	100	32	50	7			
T90AS 63 R06 22	○	63	22	40	6			
T90AS 80 R08 27	○	80	27	50	8			
T90AS 100 R10 32	○	100	32	50	10			



Face Milling Cutter A240 $\alpha=90^\circ$ Alın Freze Kafası A240 $\alpha=90^\circ$

Ordering No. Takım Kod No.	Stock Stok	Dimension Ölçüler mm				Screw Uç Sıkma Vidası	Supper Shim Dayama Pimi	Torx Wrench Torx Anahtar	Insert Kesici Uç
		ØD	Ød	H	Z				
A 240 40 R04	○	40	16	40	4	7883209	Ø4x15	T15	LDHT / LDHW 15T308
A 240 50 R05	○	50	22	40	5				
A 240 63 R06	○	63	22	40	6				
A 240 80 R06	○	80	27	50	6				
A 240 100 R08	○	100	32	50	8				
A 240 125 R09	○	125	40	63	9				
A 240 160 R12	○	160	40	63	12				
A 240 200 R16	○	200	63	63	16				
A 240 250 R18	○	250	63	63	18				

Speed Conversion Table

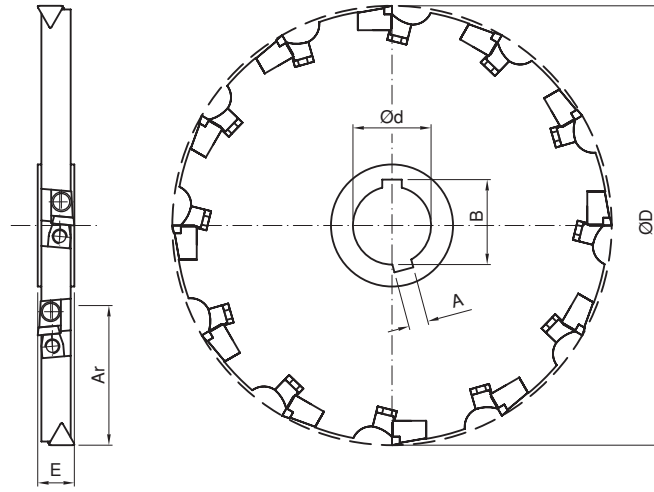
Hız dönüşüm tablosu

Kesme Hızı V (m/dak)	Freze takım çapı (mm)							
	10	12	16	20	25	32	40	50
	Fenerli mili (takımın) devri (dev/dak)							
10	318	265	199	159	127	99	80	64
20	636	531	398	318	255	199	159	127
30	954	796	597	477	382	298	239	191
40	1270	1060	796	637	509	398	318	255
50	1590	1330	995	796	637	497	398	318
60	1910	1590	1190	955	764	597	477	382
70	2230	1860	1390	1110	891	696	557	446
80	2550	2120	1590	1270	1020	796	637	509
90	2870	2390	1790	1430	1150	895	716	573
100	3180	2650	1990	1590	1270	995	796	637
110	3500	2920	2190	1750	1400	1090	875	700
120	3820	3180	2390	1910	1530	1190	955	764
130	4140	3450	2590	2070	1660	1290	1040	828
140	4460	3710	2790	2230	1780	1390	1110	891
150	4780	3980	2980	2390	1910	1490	1190	955
160	5090	4240	3180	2550	2040	1590	1270	1020
180	5730	4780	3580	2870	2290	1790	1430	1150
200	6370	5310	3980	3180	2550	1990	1590	1270
220	7000	5840	4380	3500	2800	2190	1750	1400
250	7960	6630	4970	3980	3180	2490	1990	1590
300	9550	7960	5970	4780	3820	2980	2390	1910
350	11100	9280	6960	5570	4460	3480	2790	2230
400	12700	10600	7960	6370	5090	3980	3180	2550
450	14300	11900	8950	7170	5730	4480	3580	2870
500	15920	13300	9950	7960	6370	4970	3980	3180
550	17510	14600	10900	8750	7000	5470	4380	3500
600	19100	15900	11900	9550	7640	5970	4780	3820
700	22300	18600	13900	11100	8910	6960	5570	4460
800	25500	21200	15900	12700	10200	7960	6370	5090
1000	31800	26500	19900	15900	12700	9950	7960	6370

Kesme Hızı V (m/dak)	Freze takım çapı (mm)							
	63	80	100	125	160	200	250	315
	Fenerli mili (takımın) devri (dev/dak)							
10	51	40	32	25	20	16	13	10
20	101	80	34	51	40	32	25	20
30	152	119	95	76	60	48	38	30
40	202	159	127	102	80	64	51	40
50	253	199	159	127	99	80	64	51
60	303	239	191	153	119	95	76	61
70	354	279	223	178	139	111	89	71
80	404	318	255	204	159	127	102	81
90	455	358	286	229	179	143	115	91
100	505	398	318	255	199	159	127	101
110	556	438	350	280	219	175	140	111
120	606	477	382	306	239	191	153	121
130	657	517	414	331	259	207	166	131
140	707	557	446	357	279	223	178	141
150	758	597	477	382	298	239	191	152
160	808	637	509	407	318	255	204	162
180	909	716	573	458	358	286	229	182
200	1010	796	637	509	398	318	255	202
220	1110	875	700	560	438	350	280	222
250	1260	995	796	637	497	398	318	253
300	1520	1190	955	764	596	477	382	303
350	1770	1390	1110	891	696	557	446	354
400	2020	1590	1270	1020	796	637	509	404
450	2270	1790	1430	1150	895	716	573	455
500	2530	1990	1590	1270	995	796	637	505
550	2780	2190	1750	1400	1090	875	700	556
600	3030	2390	1910	1530	1190	955	764	606
700	3540	2790	2230	1780	1390	1110	891	707
800	4040	3180	2550	2040	1590	1270	1020	808
1000	5050	3980	3180	2550	1990	1590	1270	1010

Cross Canal Cutter DISCMILL TKF.....16

Çapraz Kanal Freze.....16



Ordering No. Takım Kod No.	Stock Stok	Dimension Ölçüler mm							Clamping Pace Baskı Parçası	Clamping Screw Baskı Vidası	Right Seat Sağ Altlık	Left Seat Sol Altlık	Screw Ayar Vidası	Wrench Allen	Insert Kesici Uç
		ØD	Ød	E	A	Ar	B	Z							
TKF 125 18 16	○	125	40	18	10	30	43.8	8	FB 12	FR 650	FK 16 P-R	FK 16 P-L	M4 x 15	Ta4	TP... 1603PPN
TKF 125 20 16	○	125	40	20	10	30	43.8	8							
TKF 160 18 16	○	160	40	18	10	45	43.8	10							
TKF 160 20 16	○	160	40	20	10	45	43.8	10							
TKF 200 20 16	○	200	50	20	12	60	53.6	12							
TKF 200 24 16	○	200	50	24	12	60	53.6	12							
TKF 250 20 16	○	250	50	20	12	60	53.6	16							
TKF 250 24 16	○	250	50	24	12	60	53.6	16							
TKF 315 24 16	○	315	60	24	14	70	64	20							
TKF 400 24 16	○	400	60	24	14	80	64	24							

● Stokta Mevcut / In stock

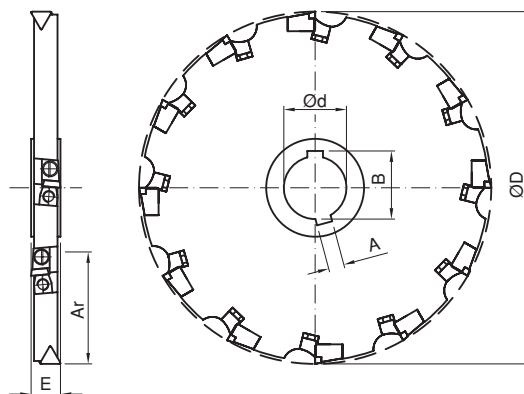
⦿ Siparişten sonra 2 hafta / 2 weeks upon the date of order

○ Siparişten sonra 4 hafta / 4 weeks upon the date of order



Cross Canal Cutter DISCMILL TKF.....16

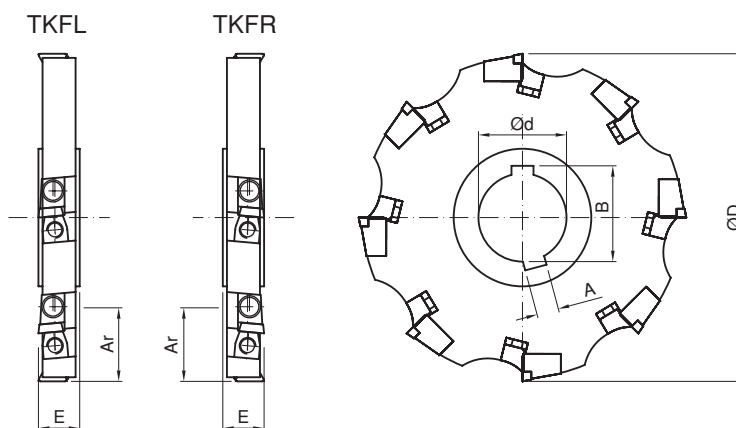
Çapraz Kanal Freze TKF.....16



Ordering No. Takım Kod No.	Stock Stok	Dimension Ölçüler mm							Clamping Pace Baskı Parçası	Clamping Screw Baskı Vidası	Right Seat Sağ Altlık	Left Seat Sol Altlık	Screw Ayar Vidası	Wrench Allen	Insert Kesici Uç
		ØD	Ød	E	A	Ar	B	Z							
TKF 80 10 11	○	80	27	10	7	15	29.8	6	331.2.851	FR 649	R331 2 832	L331 2 833	M3 x 12	Ta3	TP... 1103PPN
TKF 80 12 11	○	80	27	12	7	15	29.8	6							
TKF 100 10 11	○	100	32	10	8	24	34.8	8							
TKF 100 12 11	○	100	32	12	8	24	34.8	8							
TKF 125 10 11	○	125	40	10	10	30	43.8	10							
TKF 125 12 11	○	125	40	12	10	30	43.8	10							
TKF 160 10 11	○	160	40	10	10	45	43.8	12							
TKF 160 12 11	○	160	40	12	10	45	43.8	12							
TKF 160 14 11	○	160	40	14	10	45	43.8	12							
TKF 200 10 11	○	200	50	10	12	60	53.6	16							
TKF 200 12 11	○	200	50	12	12	60	53.6	16							
TKF 200 14 11	○	200	50	14	12	60	53.6	16							

Side Canal Cutter DISCMILL TKFR/L.....16

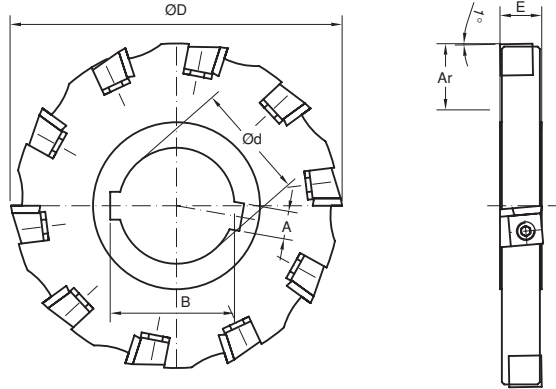
Yan Kanal Freze.....16



Ordering No. Takım Kod No.	Stock Stok	Dimension Ölçüler mm							Clamping Pace Baskı Parçası	Clamping Screw Baskı Vidası	Right Seat Sağ Altlık	Left Seat Sol Altlık	Screw Ayar Vidası	Wrench Allen	Insert Kesici Uç
		ØD	Ød	E	A	Ar	B	Z							
TKFR/L 125 18 16	○	125	40	18	10	30	43.8	8	FB 12	FR 650	FK 16 P-R	FK 16 P-L	M4 x 15	Ta4	TP... 1603PPN
TKFR/L 125 20 16	○	125	40	20	10	30	43.8	8							
TKFR/L 160 18 16	○	160	40	18	10	45	43.8	10							
TKFR/L 160 20 16	○	160	40	20	10	45	43.8	10							
TKFR/L 200 20 16	○	200	50	20	12	60	53.6	12							
TKFR/L 200 24 16	○	200	50	24	12	60	53.6	12							
TKFR/L 250 20 16	○	250	50	20	12	60	53.6	16							
TKFR/L 250 24 16	○	250	50	24	12	60	53.6	16							
TKFR/L 315 24 16	○	315	60	24	14	70	64	20							
TKFR/L 400 24 16	○	400	60	24	14	80	64	24							

Cross Canal Cutter DISCMILL S2.....12

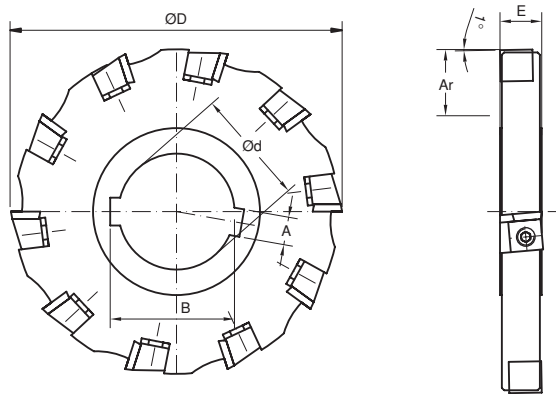
Çapraz Kanal Freze S2.....12



Ordering No. Takım Kod No.	Stock Stok	Dimension Ölçüler mm							Clamping Pace Baskı Parçası	Clamping Screw Baskı Vidası	Wrench Allen	Insert Kesici Uç
		ØD	Ød	E	A	Ar	B	Z				
S2 100 14 12	○	100	32	14	8	24	34.8	10	S2 12 R/L	FR 650	Ta4	SPUN 1203rr
S2 100 16 12	○	100	32	16	8	24	34.8	10				
S2 125 14 12	○	125	40	14	10	30	43.8	12				
S2 125 16 12	○	125	40	16	10	30	43.8	12				
S2 160 14 12	○	160	40	14	10	45	43.8	16				
S2 160 16 12	○	160	40	16	10	45	43.8	16				
S2 200 14 12	○	200	50	14	12	60	53.6	18				
S2 200 16 12	○	200	50	16	12	60	53.6	18				
S2 250 14 12	○	250	50	14	12	60	53.6	24				
S2 250 16 12	○	250	50	16	12	60	53.6	24				

Cross Canal Cutter DISCMILL TDK.....09

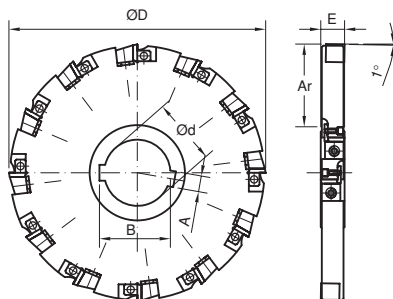
Çapraz Kanal Freze TDK.....09



Ordering No. Takım Kod No.	Stock Stok	Dimension Ölçüler mm							Clamping Pace Baskı Parçası	Clamping Screw Baskı Vidası	Wrench Allen	Insert Kesici Uç
		ØD	Ød	E	A	Ar	B	Z				
TDK 80 10 09	○	80	27	10	7	18	29.8	6	TDB 09 R/L	FR 648	Ta3	SPUN 0903rr
TDK 100 10 09	○	100	32	10	8	24	34.8	10				
TDK 100 12 09	○	100	32	12	8	24	34.8	10				
TDK 125 10 09	○	125	40	10	10	30	43.8	12				
TDK 125 12 09	○	125	40	12	10	30	43.8	12				
TDK 160 10 09	○	160	40	10	10	45	43.8	18				
TDK 160 12 09	○	160	40	12	10	45	43.8	18				
TDK 200 10 09	○	200	50	10	12	60	53.6	22				
TDK 200 12 09	○	200	50	12	12	60	53.6	22				

Cross Canal Cutter DISCMILL TSK.....12

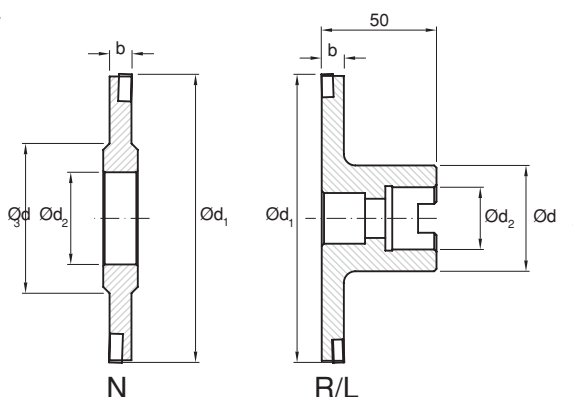
Çapraz Kanal Freze TSK.....12



Ordering No. Takım Kod No.	Stock Stok	Dimension Ölçüler mm							Clamping Pace Baskı Parçası	Clamping Screw Baskı Vidası	Wrench Allen	Insert Kesici Uç
		ØD	Ød	E	A	Ar	B	Z				
TSK 100 16 12	○	100	32	16	8	24	34.8	8	S2 12 R/L	FR 650	Ta4	SPUN 1203rr
TSK 100 18 12	○	100	32	18	8	24	34.8	8				
TSK 125 16 12	○	125	40	16	10	30	43.8	10				
TSK 125 18 12	○	125	40	18	10	30	43.8	10				
TSK 160 16 12	○	160	40	16	10	45	43.8	12				
TSK 160 18 12	○	160	40	18	10	45	43.8	12				
TSK 200 16 12	○	200	50	16	12	60	53.6	18				
TSK 200 18 12	○	200	50	18	12	60	53.6	18				
TSK 250 16 12	○	250	50	16	12	60	53.6	20				
TSK 250 18 12	○	250	50	18	12	60	53.6	20				

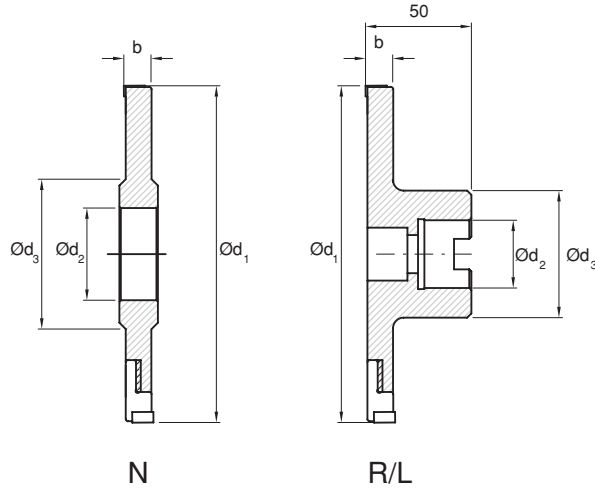
Narrow Canal and Saw Cutter DISCMILL TK Series

Dar Kanal ve Testere Freze



Ordering No. Takım Kod No.	Stock Stok	Dimension Ölçüler mm					Screw Uç Sıkma Vidası	Wrench Torx Anahtar	Insert Kesici Uç
		Ød ₁	b	Ød ₂	Ød ₃	Z			
TK 80 93 SLN12 N06	○	80	6-7	27	44	8	M3.5 x 5	T15	LNEW 1235 / LNEW 1240
TK 80 93 SLN12 N08	○	80	8-9	27	44	8	M3.5 x 6	T15	LNEW 1240 / LNEW 1245
TK 100 93 SLN12 N06	○	100	6-7	32	52	10	M3.5 x 5	T15	LNEW 1235 / LNEW 1240
TK 100 93 SLN12 N08	○	100	8-9	32	52	10	M3.5 x 6	T15	LNEW 1240 / LNEW 1245
TK 125 93 SLN12 N06	○	125	6-7	40	63	12	M3.5 x 5	T15	LNEW 1235 / LNEW 1240
TK 125 93 SLN12 N08	○	125	8-9	40	63	12	M3.5 x 6	T15	LNEW 1240 / LNEW 1245
TK 125 93 SLN12 N10	○	125	10-11	40	63	12	M3.5 x 7	T15	LNEW 1245 / LNEW 1250
TK 160 93 SLN12 N06	○	160	6-7	40	63	16	M3.5 x 5	T15	LNEW 1235 / LNEW 1240
TK 160 93 SLN12 N08	○	160	8-9	40	63	16	M3.5 x 6	T15	LNEW 1240 / LNEW 1245
TK 160 93 SLN12 N10	○	160	10-11	40	63	16	M3.5 x 8	T15	LNEW 1245 / LNEW 1250
TK 160 93 SLN12 N12	○	160	12-13	40	63	16	M3.5 x 9	T15	LNEW 1245 / LNEW 1250
TK 200 93 SLN12 N06	○	200	6-7	50	75	18	M3.5 x 5	T15	LNEW 1235 / LNEW 1240
TK 200 93 SLN12 N08	○	200	8-9	50	75	18	M3.5 x 6	T15	LNEW 1240 / LNEW 1245
TK 200 93 SLN12 N10	○	200	10-11	50	75	18	M3.5 x 8	T15	LNEW 1245 / LNEW 1250
TK 200 93 SLN12 N12	○	200	12-13	50	75	18	M3.5 x 9	T15	LNEW 1245 / LNEW 1250
TK 80 93 SLN12 R06	○	80	6-7	22	42	8	M3.5 x 5	T15	LNEW 1235 / LNEW 1240
TK 80 93 SLN12 R08	○	80	8-9	22	42	8	M3.5 x 6	T15	LNEW 1240 / LNEW 1245
TK 100 93 SLN12 R06	○	100	6-7	27	50	10	M3.5 x 5	T15	LNEW 1235 / LNEW 1240
TK 100 93 SLN12 R08	○	100	8-9	27	50	10	M3.5 x 6	T15	LNEW 1240 / LNEW 1245
TK 125 93 SLN12 R06	○	125	6-7	40	70	12	M3.5 x 5	T15	LNEW 1235 / LNEW 1240
TK 125 93 SLN12 R08	○	125	8-9	40	70	12	M3.5 x 6	T15	LNEW 1240 / LNEW 1245
TK 125 93 SLN12 R10	○	125	10-11	40	70	12	M3.5 x 7	T15	LNEW 1245 / LNEW 1250
TK 160 93 SLN12 R06	○	160	6-7	40	70	16	M3.5 x 5	T15	LNEW 1235 / LNEW 1240
TK 160 93 SLN12 R08	○	160	8-9	40	70	16	M3.5 x 6	T15	LNEW 1240 / LNEW 1245
TK 160 93 SLN12 R10	○	160	10-11	40	70	16	M3.5 x 8	T15	LNEW 1245 / LNEW 1250

SUPERMILL TK Serias / Tangential Canal Cutter Tanjantiyal kanal Freze TK Serisi



Ordering No. Takim Kod No.	Stock Stok	Dimension Ölçüler mm					Screw Uç Sıkma Vidası	Wrench Torx Anahtar	Right Cartiged Sağ Kartuş	Left Cartiged Sol Kartuş	Supper Blade Dayama Parçası	Insert Kesici Uç
		Ød ₁	b	Ød ₂	Ød ₃	Z						
TK 125 93 SCN10 N14	○	125	14-18	40	60	8	7883203	T09	93 SCN10 KFA R	93 SCN10 KFA L	93 SCN10 AP	CNHW(T) 1005
TK 125 93 SCN12 N18	○	125	18-22	40	60	8	7883209	T15	93 SCN12 KFA R	93 SCN12 KFA L	93 SCN12 AP	CNHW(T) 1205
TK 160 93 SCN10 N14	○	160	14-18	40	63	10	7883203	T09	93 SCN10 KFA R	93 SCN10 KFA L	93 SCN10 AP	CNHW(T) 1005
TK 160 93 SCN12 N18	○	160	18-22	40	70	10	7883209	T15	93 SCN12 KFA R	93 SCN12 KFA L	93 SCN12 AP	CNHW(T) 1205
TK 200 93 SCN10 N14	○	200	14-18	50	75	12	7883203	T09	93 SCN10 KFA R	93 SCN10 KFA L	93 SCN10 AP	CNHW(T) 1005
TK 200 93 SCN12 N18	○	200	18-22	50	75	12	7883209	T15	93 SCN12 KFA R	93 SCN12 KFA L	93 SCN12 AP	CNHW(T) 1205
TK 250 93 SCN10 N14	○	250	14-18	50	75	16	7883203	T09	93 SCN10 KFA R	93 SCN10 KFA L	93 SCN10 AP	CNHW(T) 1005
TK 250 93 SCN12 N18	○	250	18-22	50	75	16	7883209	T15	93 SCN12 KFA R	93 SCN12 KFA L	93 SCN12 AP	CNHW(T) 1205
TK 125 93 SCN10 R14	○	125	14-18	40	60	8	7883203	T09	93 SCN10 KFA R	93 SCN10 KFA L	93 SCN10 AP	CNHW(T) 1005
TK 125 93 SCN12 R18	○	125	18-22	40	60	8	7883209	T15	93 SCN12 KFA R	93 SCN12 KFA L	93 SCN12 AP	CNHW(T) 1205
TK 160 93 SCN10 R14	○	160	14-18	40	63	10	7883203	T09	93 SCN10 KFA R	93 SCN10 KFA L	93 SCN10 AP	CNHW(T) 1005
TK 160 93 SCN12 R18	○	160	18-22	40	70	10	7883209	T15	93 SCN12 KFA R	93 SCN12 KFA L	93 SCN12 AP	CNHW(T) 1205
TK 200 93 SCN10 R14	○	200	14-18	50	75	12	7883203	T09	93 SCN10 KFA R	93 SCN10 KFA L	93 SCN10 AP	CNHW(T) 1005
TK 200 93 SCN12 R18	○	200	18-22	50	75	12	7883209	T15	93 SCN12 KFA R	93 SCN12 KFA L	93 SCN12 AP	CNHW(T) 1205
TK 250 93 SCN10 R14	○	250	14-18	50	75	16	7883203	T09	93 SCN10 KFA R	93 SCN10 KFA L	93 SCN10 AP	CNHW(T) 1005
TK 250 93 SCN12 R18	○	250	18-22	50	75	16	7883209	T15	93 SCN12 KFA R	93 SCN12 KFA L	93 SCN12 AP	CNHW(T) 1205

APPLICATION INSTRUCTION

In 93 SCN Supermill type, narrow canal cutter provides the possibility of adjusting up to 4 mm by special cartridge constructions.

1- In standard form, assembled cartridges and connection tools have nominal canal width as $b=14$ mm.

2- If the adjusting tools of cartridge in one side are cancelled, width is enlarged to $b=16$ mm.

3- Maximum canal width can be got by assembling cutter without adjusting tools.

Canal width becomes $b=18$ mm.

UYGULAMA TAVSİYELERİ

93 SCN SUPERMILL Tipinde dar kanal frezeler özel kartuş konstraksiyonları ile 4 mm'ye kadar ayar imkanına olanak sağlar.

1- Standart formunda montajlı kartuşlar ve ara parçalar hepberaber konumda nominal kanal genişliği $b=14$ mm'dir.

2- E er bir taraftaki kartuşların altındaki ayar parçaları kaldırılırsa genişlik $b=16$ mm'ye arttırılır.

3- Maksimum kanal genişliği frezenin ayar ara parçaları olmadan monte edilmesi ile elde edilir.

Bu konumda kanal genişliği $b=18$ mm'dir.

